

# FACTBOOK ACCESSIBLE BATHROOMS

# CONTENTS

4	Projects - System solutions
6	In conversation with Michael Schlenke
8	<b>The accessible bathroom</b>
10	Requirements for accessible bathrooms
12	Requirements for accessible washing areas
14	Requirements for accessible toilets
16	Requirements for accessible shower areas
18	<b>O.novo Vita</b>
20	O.novo vita product overview
24	<b>Architectura Vita</b>
26	Architectura Vita product overview
28	<b>Accessible shower trays from Villeroy &amp; Boch</b>
30	The advantages at a glance
32	Squaro Infinity
33	Subway Infinity
34	Architectura MetalRim
36	Squaro Superflat
37	Futurion Flat
38	Overview of products
42	<b>Integrated hygiene solutions</b>
44	Checklist

**Accessible solutions by**

# VILLEROY & BOCH

Here you will find all the products you need for accessible and wheelchair-compatible bathroom furnishings: from sanitary ceramics and showers to accessories.



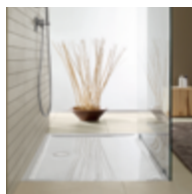
**O.novo Vita**



**Architectura MetalRim**



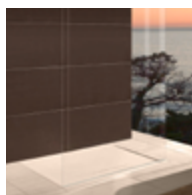
**Architectura Vita**



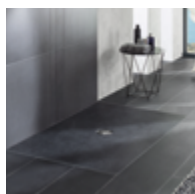
**Futurion Flat**



**Squaro Infinity**



**Squaro Superflat**



**Subway Infinity**

# PROJECTS

## The complete concept

Villeroy & Boch works with architects, planners and interior designers during and after the project – from the first draft to the final version. With the modular PROJECTS system, Villeroy & Boch offers collections and products for individual project requirements with clear price and thematic area segmentation.

### The system offers:

- Diverse products for every project requirement
- A wide range of services
- Modern tools for efficient project design
- Newly defined standards for quality, design and innovation
- Rapid and simple orientation through different price and project segments

### PRICE SEGMENTS::



#### Premium & Luxury

Collections for the most discerning requirements



#### Design & Lifestyle

Design variety for every project



#### System & Function

The modular concept for different projects



#### Entry level & broad product range

The attractive entry-level price segment for every project requirement



**PROJECT SEGMENTS:**



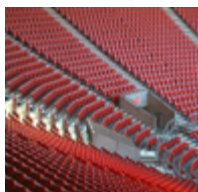
**Hotels & Gastronomy**



**Residential construction**



**Office & Commercial**



**Sport & Culture**



**Health & Healthcare**



**Public Areas & Education**

# INTERVIEW

In conversation with **Michael Schlenke**



## ACCESSIBLE BATHROOM FURNISHINGS – GREAT PRODUCTS FOR EVERYONE

Demographic change is a topic that has always been a bit suppressed in Germany. We are aware of the statistics and see the changing age pyramid. And yet, as Michael Schlenke sees it, the subject lacks “sex appeal” – something that he intends to change.

**Everyone is talking about demographic change. However, they want to look at the ‘ageing society’ in a different way. From which perspective would this be?**

Many older people feel 10 to 15 years younger than their actual age. They do not want to be confronted with their limitations, nor do they want to be taken for a fool. Older people also want cool, sexy products. We have to work on notions of age and subtly find out what it is that motivates people or what – in terms of mobility – no longer motivates them.

**Are there countries that have a ‘more casual’ approach to the target group?**

A comparison with the Netherlands is always worthwhile. In Germany, for instance, nursing homes are usually located at the outer edge of the city, and thus out of sight. By contrast, in the Netherlands, they are more often an integral component of the inner city architecture. Much more is also done with respect to the mobility of the elderly. For instance, walking aids and motor scooters are being developed that simply have a better design. They are more fun to use.

**The ‘healing architecture’ concept also has its origins in Scandinavia and the Netherlands. What exactly does this mean?**

The immediate surroundings of people, the architecture and interior design have an influence on their well-being. ‘Healing architecture’ attempts to combine all relevant components and integrates aspects such as orientation, materials, colours or smells. The private sphere and the de-stigmatisation of rooms and products are also important. Significantly more care is needed in the planning and understanding of the actual user groups.



Premium bathroom furnishings with products from the O.novo Vita collection

**Could accessible and design-oriented products from high-quality bath collections, such as O.novo Vita, Architectura Vita or Lifetime contribute to a de-stigmatisation?**

Villeroy&Boch has a major advantage here: in this target group, the company enjoys an enormous amount of trust and stands for design, tradition and quality. With accessible systems, the company has set a new course. The products are developed intensively in collaboration with the target group in a participatory process. The result is impressive solutions. It is fun to watch this process unfold.

**What criteria must a new product meet in order to reach the target group?**

There are certain limitations that must be offset with age, whether poor mobility, limited eyesight or hearing. Product development is mainly about subtly and invisibly integrating the support functions and not about blatantly developing and advertising furniture for people with a disability. We have realised that the things that older people use are not necessarily a bad thing for younger people. So there is a need for sex appeal and a little technology – but not too much.

**Personal details:** Michael Schlenke is the owner and founder of the consulting company The Caretakers, which specialises in strategy and product development. He acts as a consultant and advises companies entering the growing healthcare market. Schlenke is a member of iF – IndustrieForum Design – and of the research group ‘The Room - The Bathroom’, that develops lifelong bathroom solutions for renovations in the housing industry. [www.the-caretakers.com](http://www.the-caretakers.com)

# THE ACCESSIBLE BATHROOM

## Special requirements demand special solutions

What does "accessible" really mean?

Areas, products or systems are regarded as accessible if they can be used normally by people with a disability without difficulty and without the need for help from others.

For the accessible furnishing of bathrooms, showers and WCs, not only does the spatial configuration (sufficient movement areas, door openings, etc.) have to be taken into account but also the user's personal furnishings, including adapted aids.

The need for accessible living areas is on the increase. Demographic change, the growing number of people in need of care together with our modern understanding of equal opportunities call for sophisticated solutions that are also accessible to people with restricted mobility. Particularly in the bathroom where absolute privacy and autonomy are imperative.

### **ACCESSIBLE BATHROOM DESIGN – A PARTICULAR CHALLENGE**

Planning and execution place specific demands on all those involved. They are subject to clear guidelines and require special product solutions: bathrooms and products have to be designed and arranged in such a way as to make it much easier for users to spend time in the bathroom. These requirements have been set down in DIN 18040.

### **WITH VILLEROY & BOCH, EVEN PLANNING IS 'ACCESSIBLE'.**

On the following pages, you will find all you need to know about designing accessible bathrooms. From the most important requirements specified in the standard and a helpful checklist for your project to all standard-compliant Villeroy & Boch products that can be used in accessible bathrooms and that also meet the highest aesthetic requirements.

If you still have questions or if you need specific support for your projects, please get in touch with us.

+49 6864 81 1500

[pro.villeroy-boch.com](mailto:pro.villeroy-boch.com)

Important:

This Factbook outlines the basic principles for planning homes on the basis of DIN 18040-2: 2011-06, Construction of accessible buildings – Design principles – Part 2: Dwellings. The diagrams are for illustrative purposes only and are not suitable for ascertaining measurements.



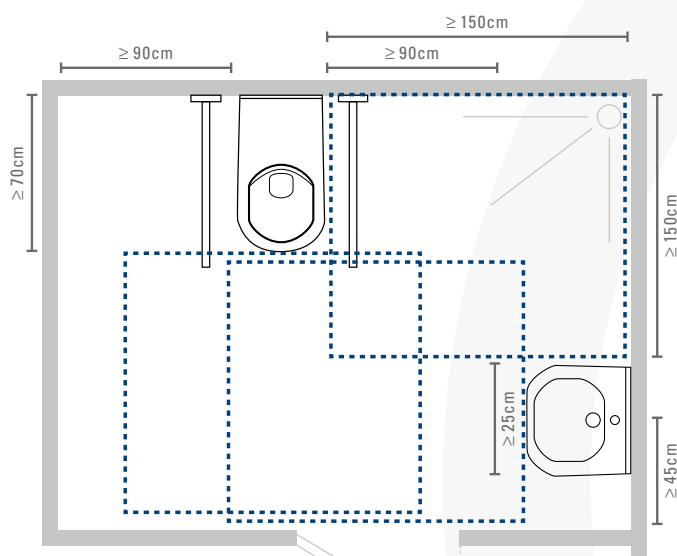


Anna Schaffelhuber, five times gold medal winner at the Paralympics in Sochi 2014.  
Brand ambassador and consultant in the development of O.novo Vita.

# REQUIREMENTS FOR ACCESSIBLE BATHROOMS

## Movement areas in the sanitary area

Accessible bathrooms are mainly defined by sufficient freedom of movement, the layout of furnishings and, in part, the installation of these furnishings (particularly in the case of shower trays). With movement areas of 150 cm x 150 cm, the room layout shown applies particularly to wheelchair-accessible bathrooms.



Important dimensions for an accessible bathroom in compliance with DIN 18040 (wheelchair-compatible).

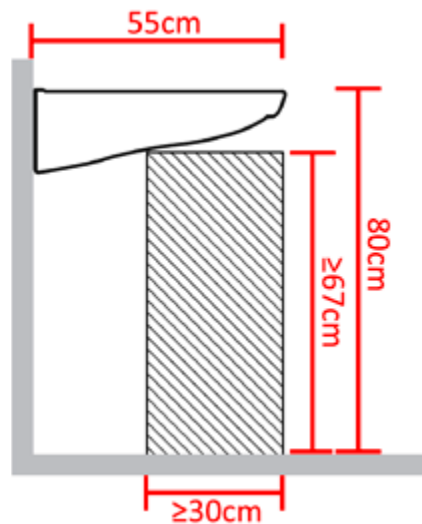
MOVEMENT AREAS	STANDARD	WHEELCHAIR
In front of sanitary objects (toilet, washbasin, shower, bath)	120 x 120 cm	150 x 150 cm
Next to toilet	20 cm clearance to left and right	90 cm wide and 70 cm deep access side
		30 cm wide and 70 cm deep on the other side
Door (clear width)	80 cm	90 cm

## GENERAL REQUIREMENTS FOR ACCESSIBLE BATHROOMS

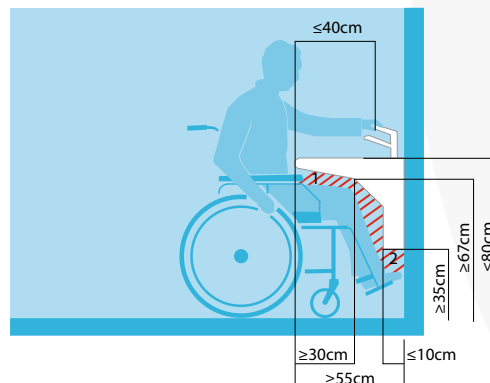
FREE MOVEMENT AREAS	<ul style="list-style-type: none"><li>▪ Required space in front of all sanitary objects 120x120 cm, for double washbasins 195x195 cm</li><li>▪ For wheelchair-users, an area of at least 150x150 cm to turn</li><li>▪ Distance between individual objects and to the wall of at least 30 cm</li><li>▪ The areas may overlap. If the shower area is part of the overlapping areas, a shower tray has to be flush-mounted.</li></ul>
DOORS	<ul style="list-style-type: none"><li>▪ Clear width: 80 cm; wheelchair: 90 cm</li><li>▪ Side-hung doors must open outwards (so that, if someone falls, they do not block the door) – and be fitted with a lock so that they can be opened from outside.</li></ul>
FLOORS	<ul style="list-style-type: none"><li>▪ flush-fitting and non-slip</li></ul>
SUPPORT	<ul style="list-style-type: none"><li>▪ Recommendation for pre-wall installation systems: 85 cm</li><li>▪ The tips of fold-up support handles must be able to bear a weight of at least 100 kg</li><li>▪ For supports and handles: wall and sub-structure for possible retrofitting to be provided by the customer</li></ul>
INSTALLATION	<ul style="list-style-type: none"><li>▪ Recommendation for pre-wall installation systems. Sufficient stability must be ensured for sub-structures e.g. extra-long toilets and folding supports</li><li>▪ The customer must ensure that the walls are suitable for the attachment of vertical and horizontal supports and handles</li></ul>
VENTILATION	<ul style="list-style-type: none"><li>▪ If a window is the only form of ventilation, it must be accessible.</li></ul>
VISUAL DESIGN	<ul style="list-style-type: none"><li>▪ All furnishing elements should be clearly detectable on the basis of their visually contrasting design.</li><li>▪ Contrasting design facilitates orientation for visually-impaired people: light-dark contrast between sanitary objects and wall/floor</li><li>▪ A contrast between the prevalent stainless-steel or chrome tap fittings and the ceramic is sufficient</li></ul>

# REQUIREMENTS FOR ACCESSIBLE WASHING AREAS

In addition to sufficient movement areas, washing areas have to be designed so that they can also be used from a seated position and they must offer adequate legroom.



Legroom for use when sitting (chair or stool)



Wheelchair-accessible washbasin in compliance with DIN 18040-2

1. Legroom in the knee area
2. Legroom in the foot area

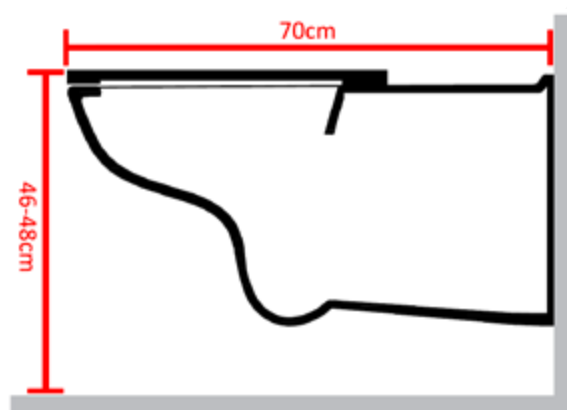


## SPECIAL REQUIREMENTS FOR WASHING AREAS/WASHBASINS

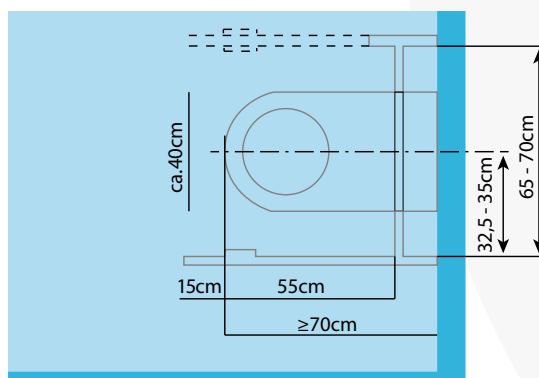
FORM	<ul style="list-style-type: none"><li>▪ Ergonomic and wheelchair-accessible design e.g. with surface-mounted or flush-mounted siphon</li></ul>
INSTALLATION	<ul style="list-style-type: none"><li>▪ Washbasins must be accessible for wheelchair users</li><li>▪ Wheelchair-accessible over a width of 90 cm (measured axially), with a depth of at least 55 cm, staggered minimum heights</li><li>▪ Washbasin height: 80 cm above upper edge finished floor</li></ul>
SUPPORT	<ul style="list-style-type: none"><li>▪ A towel holder on/next to the washbasin must also serve as support and handle</li></ul>
TAP FITTING	<ul style="list-style-type: none"><li>▪ Distance between tap fitting and front edge of washbasin: max. 40 cm</li><li>▪ Easy-to-operate, ergonomic single-lever tap fittings and thermostats</li><li>▪ With swivel outlet and extra-long lever, possibly with pull-out hand-held spray head</li><li>▪ A temperature limiter must be fitted when there is a non-contact tap fitting (protection against scalding)</li></ul>
MIRROR	<ul style="list-style-type: none"><li>▪ At least 100cm high and directly above the washbasin</li><li>▪ Mirror should be usable when standing or sitting, if necessary, height-adjustable</li></ul>
SHELF	<ul style="list-style-type: none"><li>▪ Ideally above the washbasin, in any case within reach</li></ul>

# REQUIREMENTS FOR ACCESSIBLE TOILETS

DIN 18040-2 only specifies the requirements for wheelchair-compatible toilets and the necessary operating elements. The installation of a raised floor-standing toilet is recommended for those not dependent upon a wheelchair; this type of toilet makes it much easier to stand up and sit down.



Required height and projection of wheelchair-compatible toilets



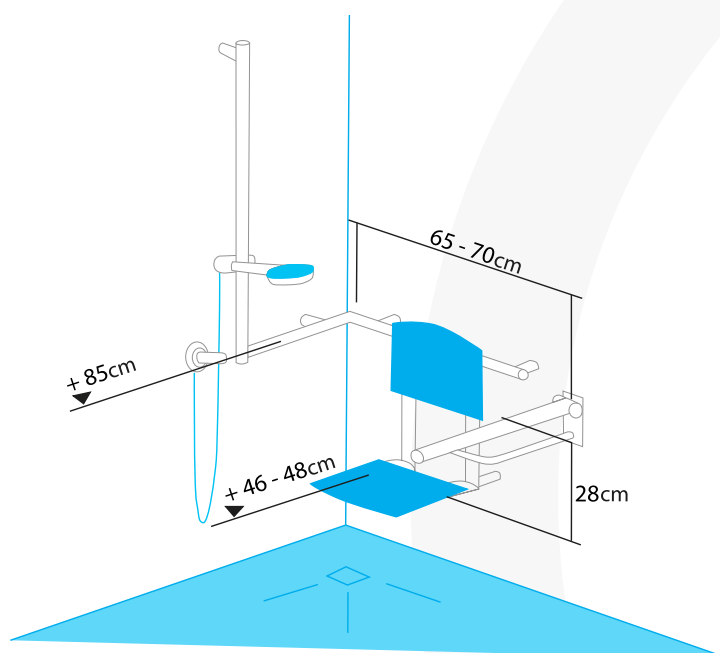
Layout of the toilet bowl and relevant fittings in compliance with DIN 18040-2

## SPECIAL REQUIREMENTS FOR WHEELCHAIR-COMPATIBLE TOILETS

<b>MOVEMENT AREAS</b>	<ul style="list-style-type: none"><li>▪ Required clearance of at least 150x150 cm as turning area</li><li>▪ Distance between toilet and wall/other objects at least 30 cm on one side, at least 90 cm on the other side (facilitates the move from wheelchair to toilet)</li><li>▪ In new builds, the toilet must be accessible from both sides</li></ul>
<b>SEAT HEIGHT</b>	<ul style="list-style-type: none"><li>▪ Height incl. seat: 46-48 cm above upper edge finished floor in compliance with DIN 18040-2</li><li>▪ Tip: Due to different wheelchair heights, the seat height should be adjusted individually</li></ul>
<b>DEPTH</b>	<ul style="list-style-type: none"><li>▪ Required depth: 70 cm, to make it easier to move from the wheelchair to the toilet when approaching from the side</li></ul>
<b>HANDLES/BACK SUPPORT</b>	<ul style="list-style-type: none"><li>▪ Folding supports must be fixed to the left and right of the toilet with their upper edge 28 cm above the height of the seat</li><li>▪ A back support is to be installed 55 cm behind the front edge of the toilet (without toilet cover!)</li></ul>
<b>CONTROL SYSTEM</b>	<ul style="list-style-type: none"><li>▪ The flush and toilet-roll holder must be reachable with hand or arm</li><li>▪ It must be possible to operate the flush when seated without changing the sitting position</li><li>▪ Alternatively, a non-contact flush can be fitted</li></ul>

# REQUIREMENTS FOR ACCESSIBLE SHOWER AREAS

Floor-flush showers not only facilitate access but also ensure greater freedom of movement in the bathroom. In compliance with DIN 18040, it must also be possible to use accessible shower areas with a wheelchair or walking frame. The relevant movement areas are the key factor.



Wheelchair-compatible shower area: Example for the installation of a folding seat in a corner position and a handrail. The horizontal support replaces a second handrail. The shower riser rail serves as a vertical support.

## SPECIAL REQUIREMENTS FOR ACCESSIBLE SHOWERS

<b>MOVEMENT AREAS</b>	<ul style="list-style-type: none"><li>▪ Required clearance min. 120x120 cm, wheelchair min. 150x150 cm</li><li>▪ The shower must be at the same level as the floor and accessible (flush with the floor) and not lower than 2 cm (with sloping transition)</li></ul>
<b>FLOOR</b>	<ul style="list-style-type: none"><li>▪ Non-slip in compliance with GUV-I 8527 assessment group B</li></ul>
<b>HAND RAIL/SHOWER SEAT</b>	<ul style="list-style-type: none"><li>▪ Retrofit possibility for folding shower seat, seat height 46-48 cm</li><li>▪ Retrofit possibility for folding handles on each side of the seat, upper edge max. 28 cm above seat height</li></ul>
<b>TAP FITTINGS</b>	<ul style="list-style-type: none"><li>▪ Single-lever shower fitting with hand-held shower spray required</li><li>▪ Height: 85 cm above upper edge finished floor</li><li>▪ Tap fitting and hand-held shower head must be usable from seated position</li><li>▪ Possibly temperature limiter as protection against scalding</li></ul>
<b>BATHS</b>	<ul style="list-style-type: none"><li>▪ The standard requires an accessible shower area. This can be supplemented by a bathtub. The movement areas correspond to those of showers.</li></ul>

# O.NOVO VITA

**Design knows no barriers**



Accessible bathroom design has a new standard: O.novo Vita. The extended collection comprises versatile bathroom ceramics and accessories for special requirements. Attractive details, such as the handles on the ceramic washbasin, offer extra comfort for cross-generational and hospital bathrooms.

O.novo Vita complies with all the standards for accessible bathrooms and the special DirectFlush WCs and optional AntiBac glaze satisfy even strict hygiene requirements. For beautiful barrier-free bathrooms!



Concealed groove makes it easier to pull up a wheelchair and provides support when standing.



The grip edge can be used to pull oneself up to the sink when using a wheelchair and also serves as support when standing. The washbasins are wheelchair-accessible and offer greater legroom (optimum when used with flush-mounted siphon).



Rimless DirectFlush toilets ensure the best possible hygiene. Available as wall-mounted toilets and floor-standing close-coupled toilet suite (O.novo Vita).



The model with raised seat (+6cm) facilitates sitting down and standing up, whilst the wall-mounted toilet with extended projection makes it easier to move from the wheelchair to the toilet.



The grip edge around the toilet cover facilitates opening and closing. The reduced distance between the cover and the ceramic reduces the spread of aerosols.



Optionally with continuous hinge bolt for greater stability or with SoftClosing and QuickRelease for greater comfort.



The special buffers on the toilet seat prevent the seat from slipping to the side, even with a heavy load, for particular safety.



# PRODUCT OVERVIEW

## O.NOVO VITA

### 80 cm washbasin

2 handles at the front  
Choice of 3 positions for tap hole  
Suitable for wheelchair users

Article number	Overflow	Tap hole
4120 80	Yes	1 punched out
4120 81	No	1 punched out
4120 82	Yes	5 pre-punched
4120 83	No	5 pre-punched



Art.-Nr.: 4120 80

### 60 cm washbasin

Continuous groove (underside)  
Choice of 3 positions for tap hole  
Suitable for wheelchair users

Article number	Overflow	Tap hole
4119 60	Yes	1 punched out
4119 61	No	1 punched out
4119 62	Yes	3 pre-punched
4119 63	No	3 pre-punched



Art.-Nr.: 4119 60

### 55 cm washbasin

Continuous groove (underside)  
Choice of 3 positions for tap hole  
Suitable for wheelchair users

Article number	Overflow	Tap hole
4119 55	Yes	1 punched out
4119 56	No	1 punched out
4119 57	No	3 pre-punched
4119 58	Yes	3 pre-punched



Art.-Nr.: 4119 55



## Wall-mounted washdown toilet, extended Projection: 700 mm

DirectFlush

Suitable for wheelchair users

Rim: open



Art.-Nr.: 4601 R0

Art.-Nr.: Seat: 9M67 S1

## Wall-mounted washdown toilet, raised (+6 cm) Projection: 595 mm

DirectFlush

Rim: open



Art.-Nr.: 4695 R0

Art.-Nr.: Seat: 9M67 S1

## Vita toilet seat

Special buffers to prevent slipping to the sides

With groove around cover

With QuickRelease and SoftClosing feature

Stainless-steel hinges

Colour contrast to facilitate orientation



Art.-Nr.: 4620 R0

Art.-Nr.: Seat: 9M67 S1





START

## PRODUCT OVERVIEW

### O.NOVO VITA

#### Floor-standing washdown toilet for close-coupled WC-suite; raised (+6 cm) and extended projection: 710 mm

Horizontal outlet,  
Concealed 4 holes for fastening  
DirectFlush  
Suitable for wheelchair users, Rim: open



Art.-Nr.: 4620 R0  
Art.-Nr.: Seat: 9M67 S1

#### Floor-standing wash-out toilet, raised (+6 cm)

Horizontal outlet  
Concealed 4 holes for fastening  
Suitable for wheelchair users  
Rim: closed



Art.-Nr.: 4683 10  
Art.-Nr.: Seat: 9M67 S1

#### Floor-standing wash-out toilet, raised (+6 cm)

Horizontal outlet  
Concealed 4 holes for fastening  
Suitable for cross-generational bathrooms  
Rim: closed



Art.-Nr.: 4684 10  
Art.-Nr.: Seat: 9M67 S1

#### Vita seat

Fastening from below  
Special buffers to prevent slipping to the sides  
Continuous hinge-bolt  
Available in blue (colour P1)  
Lid: No



Art.-Nr.: Seat: 9M97 61 T1

## Vita toilet seat

Fastening from above

Special buffers to prevent slipping to the sides

SoftClosing/QuickRelease

Antibacterial

Available in blue (colour P1)

Lid: Yes



Art.-Nr.: Seat: 9M67 S1 T1

## Vita toilet seat

Fastening from below

Special buffers to prevent slipping to the sides

Continuous hinge-bolt

Antibacterial

Available in blue (colour P1)

Lid: Yes



Art.-Nr.: Seat: 9M72 61 T1

# ARCHITECTURA VITA

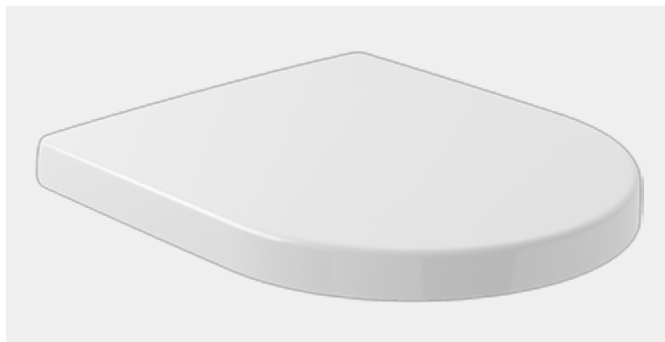
**Safety, comfort and aesthetics**



Architectura Vita offers intelligent solutions for accessible bathrooms down to the very last detail. The special thing here is that the collection satisfies both the prescribed standards and meets aesthetic requirements, too.

The most striking feature of Architectura Vita is the front edge of the washbasin. The ergonomic form and inward curve offers wheelchair users more space to manoeuvre which considerably facilitates use.

To ensure perfect hygiene all the ceramic articles are optionally available with AntiBac.



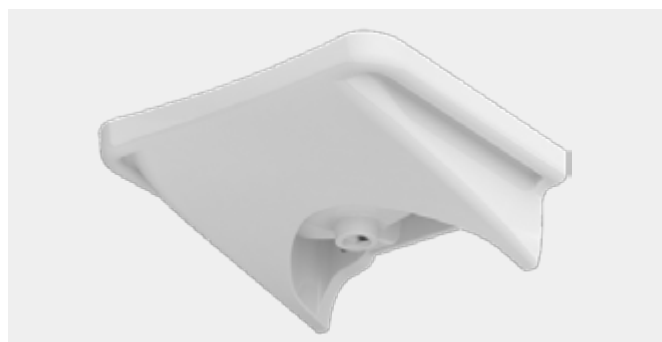
Special buffers prevent the seat from slipping sideways.



The washbasins are wheelchair compatible and provide sufficient legroom.



The wall-mounted WC with an extended projection. makes it easier to move from the wheelchair to the toilet.



A concealed groove makes it easier to pull up a wheelchair and provides support when standing.

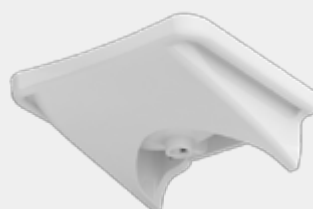


The ergonomic, inward-curving front and the wide rim make the washbasin easier to use.

### 65 cm washbasin

Groove at the sides (underside)  
Choice of 5 positions for tap hole  
Suitable for wheelchair users

Article number	Overflow	Tap hole
5178 65	Yes	5 pre-punched
5178 66	No	5 pre-punched
5178 67	Yes	1 tap hole punched through
5178 68	No	1 tap hole punched through

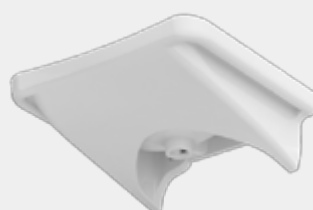


Art.-Nr.: 5178 67

### 60 cm washbasin

Groove at the sides (underside)  
Choice of 5 positions for tap hole  
Suitable for wheelchair users

Article number	Overflow	Tap hole
5178 60	Yes	1 tap hole punched through
5178 61	No	1 tap hole punched through
5178 62	Yes	5 pre-punched
5178 63	No	5 pre-punched



Art.-Nr.: 5178 60

### Wall-mounted washdown toilet, projection: 710 mm

Suitable for wheelchair users  
Rim: Standard



Art.-Nr.: 5678 10

**Wall-mounted washdown toilet,  
projection: 710 mm**

DirectFlush  
Rim: open



Art.-Nr.: 5678 10

Art.-Nr.: Seat: 98M9 C1

**Seat  
for wall-mounted toilet, extended (Art. no. 5678 10)**

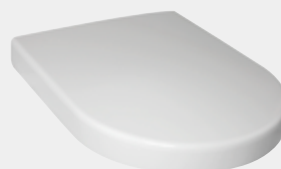
Continuous hinge-bolt  
Without cover



Art.-Nr.: 9M63 61

**Seat for wall-mounted toilet, extended  
(Art. no. 5678 10)**

Special buffers to prevent slipping to the sides  
with cover



Art.-Nr.: 9M51 B1

# ACCESSIBLE SHOWER TRAYS FROM VILLEROY & BOCH

## The perfect combination of safety and comfort

Villeroy&Boch shower trays offer many installation advantages and possibilities – from stable or non-slip materials to colour variants for optimum room orientation.

When fitted flush, the ultra-flat shower trays make it easier to get in and out safely and are easily wheelchair-accessible (maximum height: 2 cm). Flexible and large formats ensure optimum freedom of movement, whilst non-slip surfaces ensure safety. And thanks to clear, elegant forms, they also offer endless possibilities for bathroom design.

### ADVANTAGES OF A SHOWER TRAY COMPARED TO A TILED FLOOR

- Easier to clean thanks to the smooth, joint-free surface
- More hygienic as germs cannot accumulate easily
- No puddles, water flows away
- Reduces the risk of leaks
- Easy to install
- Matching shower enclosures
- Aesthetic solution

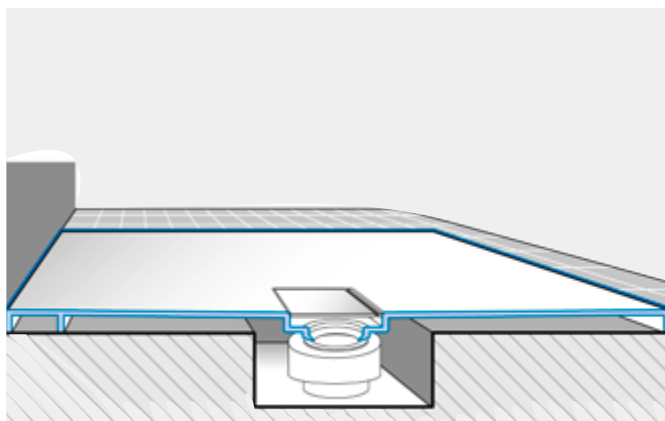






# THE ADVANTAGES AT A GLANCE

## Unbeatable selling points for accessible shower trays from Villeroy & Boch



**Flush-fit installation.** The ultra-flat shower trays from Villeroy & Boch are ideal for flush-mounted installation ensuring level entry.



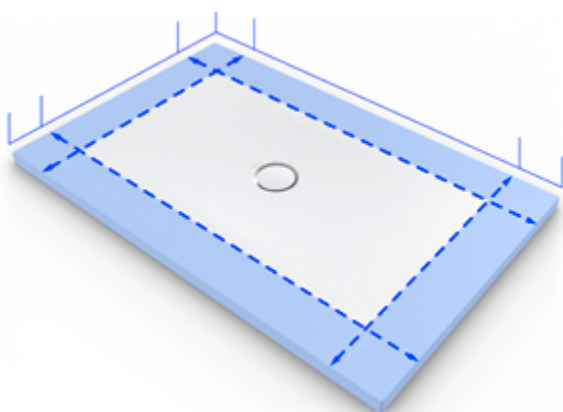
**Maximum stability.** The innovative MetalRim technology from Villeroy & Boch, galvanised steel reinforcement in the rim area, ensures maximum material stability.



**Non-slip materials.** All Villeroy & Boch shower trays are also available with non-slip finishes for wet barefoot areas.



**Non-slip coating.** VilboGrip by Villeroy & Boch is a full-surface coating for optimum slip-resistance (slip-resistance class C) and is easy to clean.



**Impressive variety of models.** The Subway Infinity shower tray alone is available in 27 sizes and offers individual design possibilities thanks to special dimensions and forms.



**Wide choice of colours** Various shower-tray colours offer architects and planners diverse design possibilities and users optimum orientation within the room.



**Special hygiene.** Villeroy&Boch Quarryl® shower trays have precise, smooth edges for narrower joints in the transition areas and are thus particularly hygienic.



**Shock and scratchproof ceramic.** As the flattest ceramic shower tray in the range, LIFETIME PLUS offers all the advantages of premium ceramics at a height of just 35 mm.



# SQUARO INFINITY

**The customised solution**



- Special sizes cut precisely to size
- Customised adaptability for columns, corners or projections
- Made of high-quality Quarryl®
- Colour-coordinated to match the most popular Villeroy & Boch tile colours
- Highest anti-slip class C

# SUBWAY INFINITY

**Adapts and fits in**



- Customised special sizes available
- Customised adaptability for columns, corners or projections
- Made of high-quality ceramic
- 3 colours with anti-slip class PN18
- Available with the innovative ViPrint décors

# ARCHITECTURA METALRIM

**Ultra-flat design, extra stability**



- Maximum stability thanks to galvanised steel reinforcement in the rim area (MetalRim)
- Made of premium acrylic
- Ultra-flat design, just 15mm high
- Flush-fit installation and installation on tiles possible
- Anti-slip class C





# SQUARO SUPERFLAT

**Perfect harmony**



- Ultra-flat design, just 18 mm high
- Made of high-quality Quaryl®
- Quick installation thanks to integrated siphon
- Colour-coordinated to match the Villeroy & Boch floor tiles
- Anti-slip class C



# FUTURION FLAT

**Clear-cut design**



- Exclusive look
- Made of high-quality Quaryl®
- Ultra-flat design, just 17 mm high
- Flush-fit installation and installation on tiles possible
- Anti-slip class C



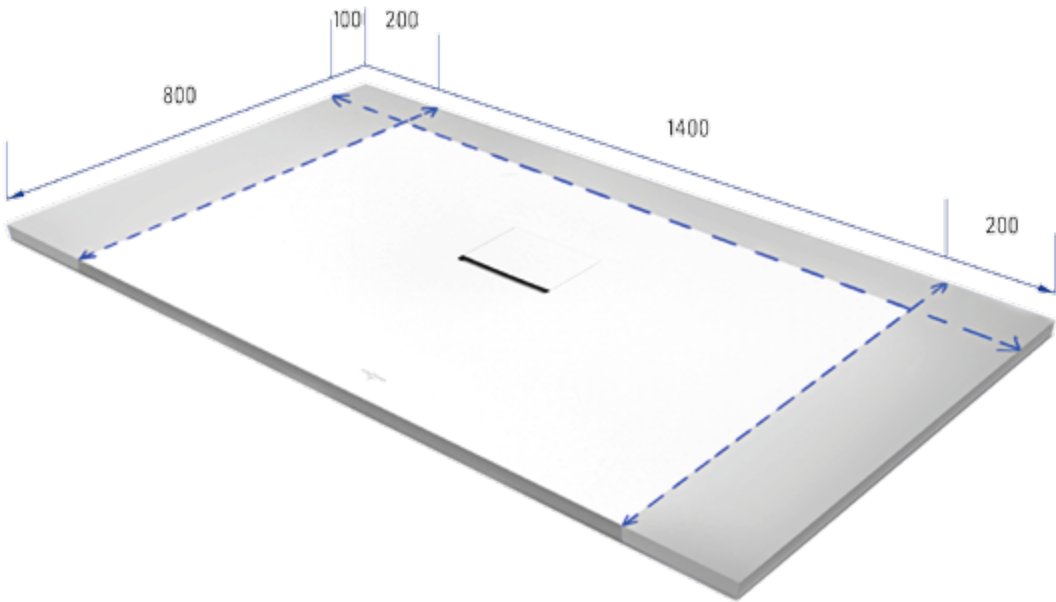
# PRODUCT OVERVIEW

## SQUARO INFINITY

Available with anti-slip class C  
Material: Quarryl®  
Suitable for wheelchair users (in the case of flush-fitted installation)  
Can be precisely cut with millimetre accuracy to almost any size

Length in mm	Width in mm				
	700	750	800	900	1000
	●	●	●		
	●	●	●	●	
	●	●	●	●	●
	●	●	●	●	
	●	●	●	●	
	●	●	●	●	●*
	●	●	●	●	●*
	●	●	●	●	●
800					
900					
1000					
1100					
1200					
1300					
1400					
1500					
1600					
1700					
1800					

\* only suitable for flush-fit installation



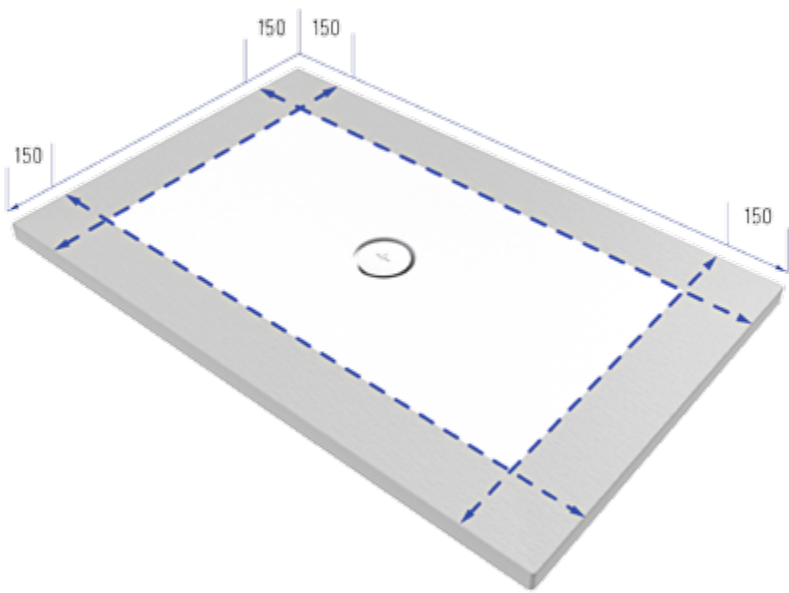


# SUBWAY INFINITY

Available with anti-slip class C  
 Material: Ceramics  
 Suitable for wheelchair users (in the case of flush-fitted installation)  
 Customised special sizes available

		Width in mm			
Length in mm		700	750	800	1000
	800		●*	●*	
	900	●	●	●	●
	1000	●	●	●	●
	1100				●
	1200	●*	●	●	●
	1300				●
	1400		●	●	●
	1500		●*	●*	●
	1600				●

\* only suitable for flush-fit installation





## PRODUCT OVERVIEW



# ARCHITECTURA METALRIM

Available with anti-slip class C (only in White)

Material: Acrylic

Diameter of outlet 90 mm

Suitable for wheelchair users (in the case of flush-fitted installation)

Models and dimensions	Length	Width
 RECTANGULAR	900 mm	700 / 750 / 800 mm
	1000 mm	700 / 750 / 800 / 900 mm
	1200 mm	700 / 750 / 800 / 900 mm
	1400 mm	700 / 750 / 800 / 900 mm
	1500 mm	800 / 900 / 1000 mm
	1600 mm	700 / 750 / 800 / 900 mm
	1700 mm	700 / 750 / 800 / 900 mm
	1800 mm	800 / 900 mm
 SQUARE	800 mm	800 mm
	900 mm	900 mm
	1000 mm	1000 mm



## SQUARO SUPERFLAT

Available with anti-slip class C

Material: Quaryl®

Suitable for wheelchair users (in the case of flush-fitted installation)

Models and dimensions	Length	Width	Height
 RECTANGULAR	1200 mm	900 mm	18 mm
	1400 mm	900 mm	18 mm
	1600 mm	900 mm	18 mm
	1700 mm	800 mm	18 mm
	1800 mm	900 mm	18 mm
 SQUARE	900 mm	900 mm	18 mm
	1000 mm	1000 mm	18 mm
 QUARTER-CIRCLE	900 mm	900 mm	18 mm



## FUTURION FLAT

Available with anti-slip class C

Material: Quaryl®

Suitable for wheelchair users (in the case of flush-fitted installation)

Models and dimensions	Length	Width	Height
 <b>RECTANGULAR</b>	900 mm	800 mm	17 mm
	1000 mm	800 mm	17 mm
	1200 mm	800 mm	17 mm
	1200 mm	900 mm	17 mm
	1400 mm	900 mm	17 mm
	1500 mm	1000 mm	17 mm
	1600 mm	900 mm	17 mm
	1800 mm	900 mm	17 mm
 <b>SQUARE</b>	900 mm	900 mm	17 mm
	1000 mm	1000 mm	17 mm

# INTEGRATED HYGIENE SOLUTIONS

## Maximum cleanliness for accessible bathrooms



### The generation of rimless toilets DIRECTFLUSH

- The inside of the bowl is flushed in its entirety without splashing
- Maximum flushing performance thanks to precise water flow
- Easy, fast cleaning thanks to rimless design
- Visible hygiene for the user, too
- Various models available: Compact, Standard, XL and Vita



Toilet with skirting



Rimless toilet, with ledge

By combining the three technologies DirectFlush, CeramicPlus and AntiBac, Villeroy & Boch offers a safe and reliable solution for accessible bathrooms in properties where maximum cleanliness and perfect hygiene are a must – throughout the product lifetime.



### The dirt-repellent surface finish **CERAMICPLUS**

- Non-stick effect prevents limescale deposits
- Permanently dirt-repellent and a brilliant sheen
- 90 % less water\*, cleaning agent\*\* and cleaning time\*\* than before
- Available for all sanitary ceramic products and all colours



\* When removing marks made by dirty water

\*\* When removing limescale, compared with standard ceramics (study carried out by the wfk-Forschungsinstitut für Reinigungstechnologie)



### The antibacterial glaze **ANTIBAC**

- Has been proven to reduce the growth of bacteria by more than 99.9%\*\*\*
- Available for ceramic surfaces and toilet seats
- Ideal for the strict hygiene standards in the commercial sector
- Can be combined with CeramicPlus and DirectFlush for optimum hygiene



\*\*\* Confirmed by the independent BOKEN Quality Evaluation Institute, the Federal Institute for Material Testing (BAM) in Berlin and IZORE Centrum Infectieziekten Friesland, NL

# ACCESSIBLE BATHROOMS CHECKLIST

## Just print out and fill in

This checklist is a non-binding planning tool for accessible bathrooms.  
It only provides suggestions and cannot always cover all needs.

Customer

Date

Project

Address

### LOCAL CONDITIONS

	YES	NO
Are there sufficient movement areas in front of the bathing elements? (120x120 cm/wheelchair: 150x150 cm)	<input type="checkbox"/>	<input type="checkbox"/>
Is the doorway accessible and wide enough for a wheelchair?	<input type="checkbox"/>	<input type="checkbox"/>
Does the door open outwards?	<input type="checkbox"/>	<input type="checkbox"/>
Can the door be unlocked from the outside in an emergency?	<input type="checkbox"/>	<input type="checkbox"/>
Is the floor slip-resistant even when wet?	<input type="checkbox"/>	<input type="checkbox"/>
Are shelves and cupboards easy to reach?	<input type="checkbox"/>	<input type="checkbox"/>
Is there sufficient contrast between the fixtures and their surroundings?	<input type="checkbox"/>	<input type="checkbox"/>
Is there an alarm system?	<input type="checkbox"/>	<input type="checkbox"/>

### WASHBASIN AREA

	YES	NO
Is the washbasin wheelchair-accessible (surface-mounted or flush-mounted siphon, without cabinet)?	<input type="checkbox"/>	<input type="checkbox"/>
Can the washbasin also be used from a seated position?	<input type="checkbox"/>	<input type="checkbox"/>
Are handles fitted on both sides, either on or next to the washbasin?	<input type="checkbox"/>	<input type="checkbox"/>
Has the washbasin been fitted with an extra-long single-mixer tap fitting with temperature limiter?	<input type="checkbox"/>	<input type="checkbox"/>
Does the tap fitting have a pull-out hand-held spray head?	<input type="checkbox"/>	<input type="checkbox"/>
Are there sufficient shelves within reach?	<input type="checkbox"/>	<input type="checkbox"/>
Can the mirror also be used from a seated position and, if necessary, is it height-adjustable?	<input type="checkbox"/>	<input type="checkbox"/>
Is a seat required?	<input type="checkbox"/>	<input type="checkbox"/>



TOILET AREA	YES	NO
Is there sufficient room for manoeuvre at the side? (min. 20 cm, wheelchair: one side min. 90 cm, other side min. 30 cm)	<input type="checkbox"/>	<input type="checkbox"/>
Is the toilet accessible from both sides (new build) or from at least one side (renovation)?	<input type="checkbox"/>	<input type="checkbox"/>
Has the height of the toilet been individually adjusted?	<input type="checkbox"/>	<input type="checkbox"/>
Is a toilet with a larger installation depth (70 cm) required?	<input type="checkbox"/>	<input type="checkbox"/>
Are handles fitted on both sides of the toilet?	<input type="checkbox"/>	<input type="checkbox"/>
Can at least one handle on the toilet be folded away?	<input type="checkbox"/>	<input type="checkbox"/>
Are the flush and toilet-roll holder easy to reach and use?	<input type="checkbox"/>	<input type="checkbox"/>

SHOWER AREA	YES	NO
Is the shower floor-flush and accessible?	<input type="checkbox"/>	<input type="checkbox"/>
Is the base of the shower anti-slip?	<input type="checkbox"/>	<input type="checkbox"/>
Is a shower seat installed or can one be retrofitted?	<input type="checkbox"/>	<input type="checkbox"/>
Are there handles in the shower?	<input type="checkbox"/>	<input type="checkbox"/>
Is there any shelf space?	<input type="checkbox"/>	<input type="checkbox"/>
Are the taps easy to use, also from a seated position?	<input type="checkbox"/>	<input type="checkbox"/>
Is a tap fitting with temperature limiter required (protection against scalding)?	<input type="checkbox"/>	<input type="checkbox"/>
Do the glazed surfaces have high-contrast markings and are they shatterproof?	<input type="checkbox"/>	<input type="checkbox"/>

FIND OUT MORE AT:  
[PRO.VILLEROY-BOCH.COM/PROJECTS](http://PRO.VILLEROY-BOCH.COM/PROJECTS)