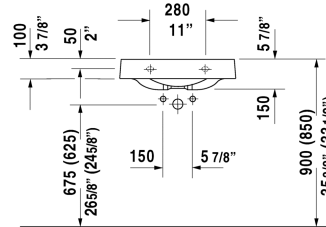
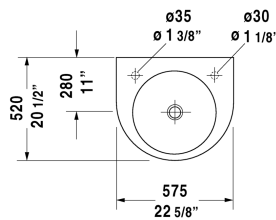


Architec Washbasin # 0449580000 / 0449580008 / 0449580009 / 0449580023

| < 22 5/8" Inch > |



Washbasin	Dimension	Weight	Order number
without overflow, with faucet deck, underside fully glazed, hardware included, wall-mounted, cUPC® listed*, 22 5/8" Inch			
Colors			
00 White			
Variant			
●● without faucet hole	22 5/8" x 20 1/2" Inch	33.5 lb	0449580000
●● faucet hole on right side	22 5/8" x 20 1/2" Inch	33.5 lb	0449580008
●● faucet hole on left side	22 5/8" x 20 1/2" Inch	33.5 lb	0449580009
●● faucet hole on left side, soap dispenser right	22 5/8" x 20 1/2" Inch	33.5 lb	0449580023
Infobox			
* Complies with following standards: ASME A112.19.2/CSA B45.1, Not available with WonderGliss			
Slotted waste for washbasins without overflow	2" Inch	0.7 lb	005024
Suitable products			
Soap dispenser for washbasins with hole for soap dispenser, for washbasin # 044845, 044958, 046240, 045058, 044358, 032050, Ø 1 1/8" Inch	Ø 1 1/8" Inch		009972

All drawings contain the necessary measurements which are subject to standard tolerances. They are stated in inch & mm and are non-binding. Exact measurements, in particular for customized installation scenarios, can only be taken from the finished ceramic piece.